

# STF

10 A / 250 VAC  
EN 60320

10 A / 250 VAC  
15 A / 125 VAC  
UL 498

TYPICAL APPLICATIONS	Ironing systems, appliance inlet for cold/warm conditions with earthing contact, mounting hole with 90° countersink
WIRING DIAGRAMAS	2-pole + earth
CUT OUT	screw fixing
GWT	850 °C
GWT NO FLAME (<2sec)	750 °C on demand



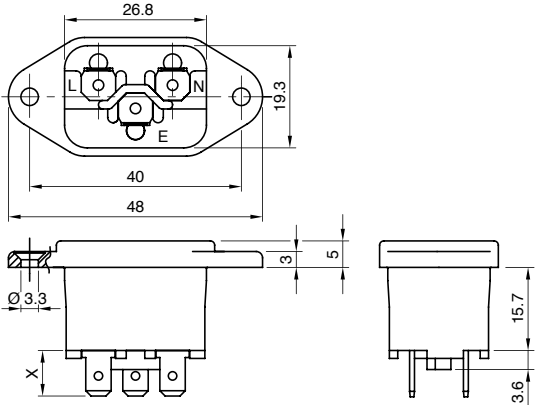
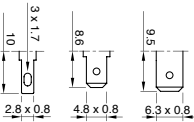
## CUT OUT

## DRAWING

STF...  
C14  
Class I  
T 70 °C



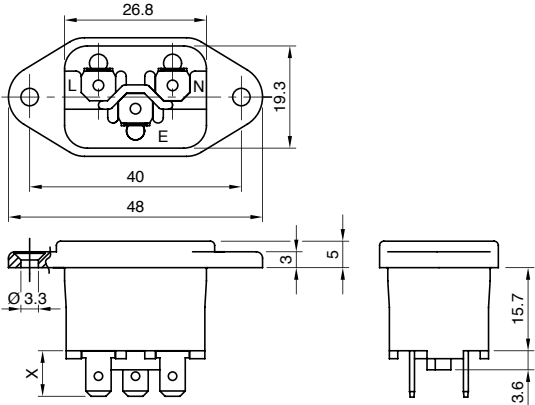
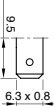
Mounting hole 90° countersink  
On small side



STF...  
C16  
Class I  
T 120 °C



Mounting hole 90° countersink  
On small side



STF...  
C16  
Class I  
T 120 °C



Mounting hole 90° countersink  
On large side

